

Dream Shopper's Tote Bag

A quick and easy to make shaped tote bag.

Designed by Janet Goddard www.patchworkpatterns.co.uk

Finished Size 16" x 14" x 5" (40cm x 35cm x 13cm) excluding handles
using the Dream collection from Makower UK www.makoweruk.com



makower uk

Unit 14, Cordwallis Business Park, Clivemont Road,
Maidenhead, Berkshire SL6 7BU +44(0)1628 509640
sales@makoweruk.com www.makoweruk.com

 andover

Dream Shopper's Tote Bag

A quick and easy to make shaped tote bag.

Designed by Janet Goddard www.patchworkpatterns.co.uk

Finished Size 16" x 14" x 5" (40cm x 35cm x 13cm) excluding handles
using the Dream collection from Makower UK www.makoweruk.com

Fabric Requirements:

Fabric	Useage	Design	Description	Amount
Fabric One	Centre panel of the outer bag	1862 Q	Exotic Flower	50cms (20")
Fabric Two	Squares on the outer bag	2011 P	Foulard	15cms (6")
Fabric Three	Side panels on the outer bag	2007 S	Floral Scroll	35cms (13")
Fabric Four	Handles	2007 S	Floral Scroll	20cms (7")
Fabric Five	Lining	2007 Q	Floral Scroll	50cms (20")
Other; 50cms (20") fusible wadding.				

Notes;

- Read the pattern in full before starting.
- ¼" seams are used throughout.
- All fabrics quantities are cut width of fabric (WOF) and allow for one way designs
- Make sure to visit <http://www.makoweruk.com/projects/> to ensure you are working from the most up-to-date version of the pattern.

Cutting Instructions:

Fabric One:

Cut two (6 ½" x 17 ½ ") rectangles

Fabric Two:

Cut four (5 ½ ") squares

Fabric Three:

Cut four (5 ½" x 12 ½ ") rectangles

Cut two (3 ½" x 26") strips

Fabric Four:

Cut one (16 ½" x 33") rectangle

Wadding:

Cut two (16 ½ " x 17 ½ ") rectangles

Cut two (1" x 26") strips

Sewing Instructions:

To Stitch the Outer Bag:

1. Stitch a 5 ½" square of fabric two to one end of each of the (5 ½" x 12 ½") fabric three rectangles. Press seams towards the rectangles.
2. Stitch the units completed in step one to each side of a fabric one (6 ½" x 17 ½") rectangle, ensuring that the squares are positioned at the top of these units. Press seams away from the centre.
3. Iron the (16 ½ " x 17 ½ ") rectangles of fusible wadding to the reverse of the units completed in step two.
4. To shape the bag, mark 3" from the outer edge at the bottom of each outer bag unit completed in step three. Place a ruler on the very outer edge at the top of the right side of the bag and on the 3" marking at the bottom of the bag. Cut the wedge shape of fabric away. Repeat on all four corners of the outer bag pieces.

5. Place the outer bag units on top of each other, right sides facing, matching the seams and stitch down both sides and across the bottom.
6. To shape the base of the bag, match the centre fold of the base with each side seam. Measure in 2" along the seam line from the outer point. Pin and draw a line with a marking pencil from edge to edge horizontally. Stitch on this line and then trim off excess fabric. Turn the bag right side out.

To Stitch the Handles:

7. To stitch the handles take the two (3 ½" x 26") strips of fabric three and press under ¼" on one long edge of each. Lay the (1" x 26") strip of fusible wadding down the centre of wrong side of each handle and iron in place.
8. Fold the raw edge of the fabric to the centre of the wadding and then the folded edge on top. The folded edge should overlap the raw edge. Pin in place. Top stitch down the folded edge. Top stitch along each outer edge.
9. Pin the ends of the handles, right sides facing to the top edge of each outer bag section, positioning the end of each handle over the centre panel seam line. Tack in place.

To Stitch the Lining:

10. Fold the (16 ½" x 33") fabric four rectangle up so that the right sides are facing and the 16 ½" raw edges are at the top together. Shape the lining in the same way that the outer bag was shaped in step four. Stitch down each side, leaving a 4" gap in one side for turning.
11. To shape the base of the lining in the same way as the outer bag follow the instructions in step six.

To Stitch the Bag Together:

12. Place the outer bag inside the lining so that the right sides of the fabric are facing. Make sure that the handles are pushed down between the two layers. Pin the outer bag and the lining together at the top, lining up the side seams and raw edges.
13. Stitch around the top edge, back stitch at the beginning and end. Turn the bag through the opening and press the seam around the top edge of the bag so that it lays flat. Topstitch all the way around the top of the bag. Stitch the gap in the lining closed.
14. Enjoy using your bag!



1862/Q Exotic Flower



1862/S Exotic Flower



1868/S Flower Trail



2014/S Mini Leaf



2014/P Mini Leaf



1868/Q Flower Trail



2010/P Vine



2008/S Meadow



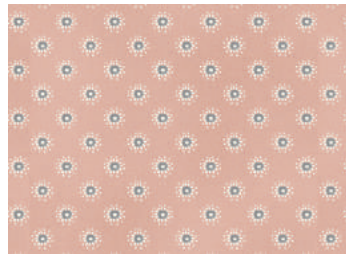
2008/P Meadow



2010/S Vine



2007/S Floral Scroll



2011/P Foulard



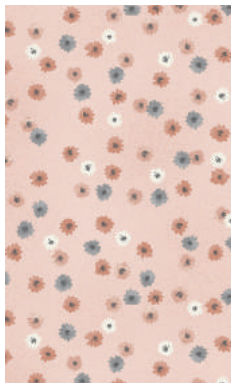
2011/Q Foulard



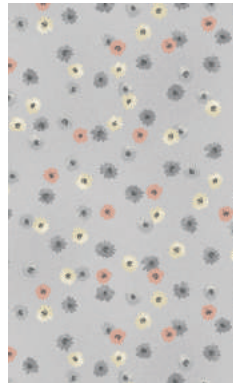
2007/Q Floral Scroll



2009/Q Blossom



2009/P Blossom



2009/S Blossom



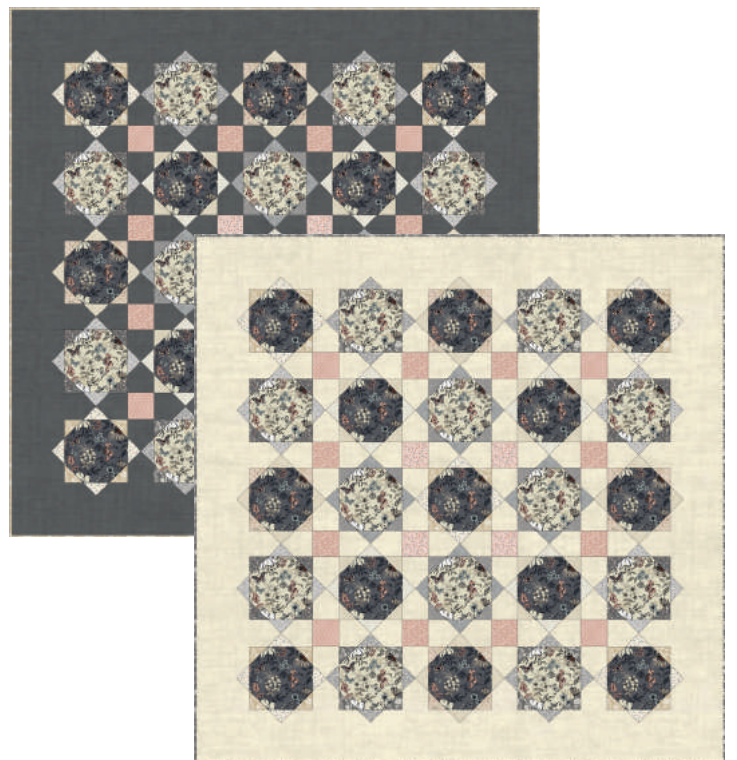
2013/Q Daisy



2013/P Daisy



2013/S Daisy



Finished size 60" x 60" (1.5 m x 1.5m)

Designed by Lynne Goldsworthy of lilysquilts.blogspot.com

Download free instructions from www.makoweruk.com