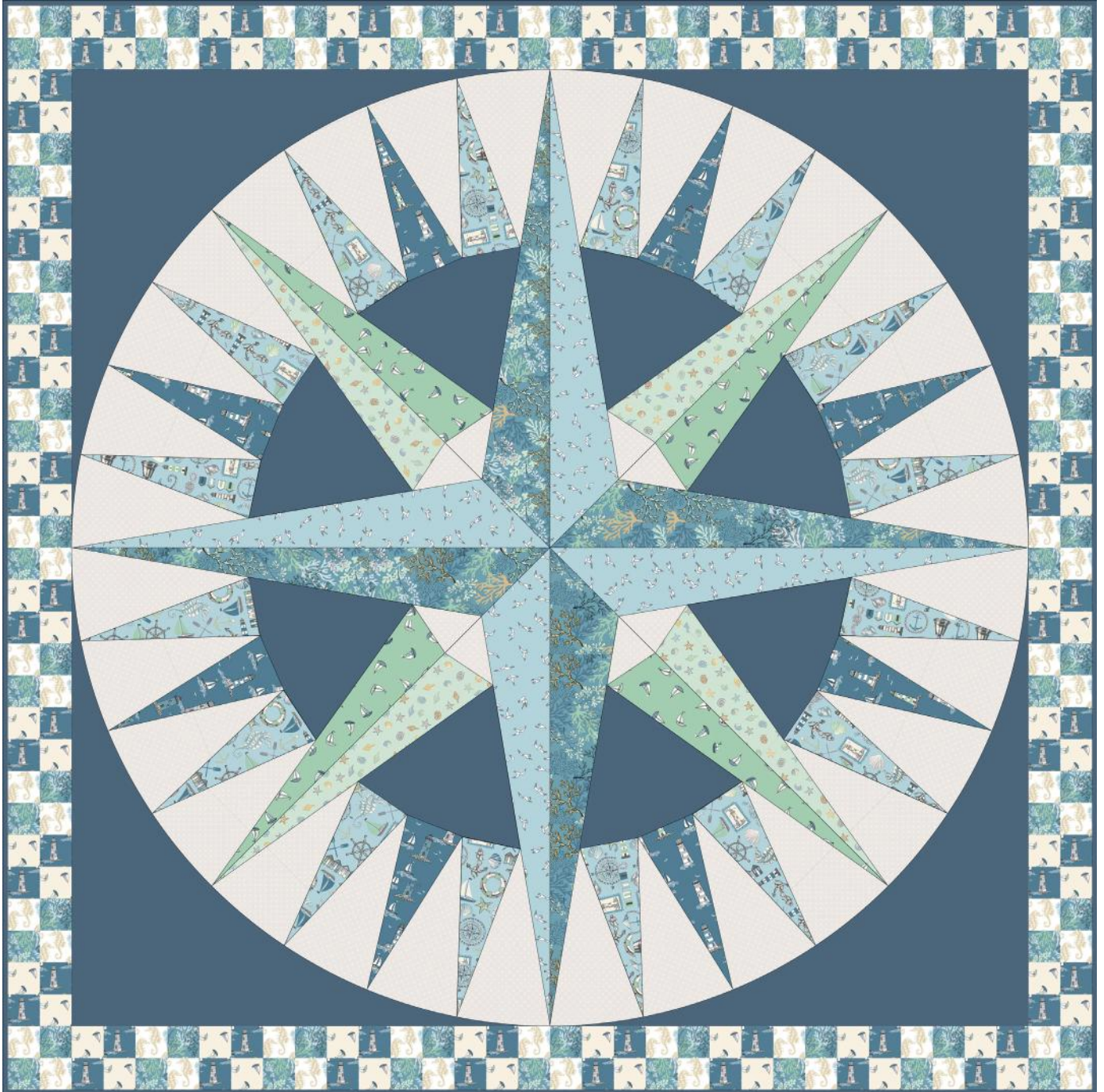


# Beachcomber

Finished size 51" x 51" (1.30m x 1.30m)

Designed by Lynne Goldsworthy of [lilysquilts.blogspot.com](http://lilysquilts.blogspot.com)  
using the Beachcomber collection from Makower UK [www.makoweruk.com](http://www.makoweruk.com)



**makower uk**

Unit 14, Cordwallis Business Park, Clivemont Road,  
Maidenhead, Berkshire SL6 7BU +44(0)1628 509640  
[sales@makoweruk.com](mailto:sales@makoweruk.com) [www.makoweruk.com](http://www.makoweruk.com)

 **andover**

# Beachcomber

Finished size 51" x 51" (1.30m x 1.30m)

Designed by Lynne Goldsworthy of [lilysquilts.blogspot.com](http://lilysquilts.blogspot.com)

using the Beachcomber collection from Makower UK [www.makoweruk.com](http://www.makoweruk.com)

## Fabric Requirements

SKU	Description	Amount
1988/1	Beach Huts	3m / 3 ¼ yds
1989/1	Icons	One FQ
1990/1	Lighthouses	40cm / 15"
1991/1	Coral	40cm / 15"
1992/1	Seagulls	25cms / ¼ yd
1993/Q	Boats	One FQ
1993/T	Boats	One F8th
1994/1	Shells	One F8th
1995/1	Seahorses	One FQ
1473/B7	Linen Texture	1.25m / 1 ¼ yds
2/8702 C	Bijoux Square Dot	80cms / ⅘ yard
Wadding	279 Cotton Mix 80-20 from Vlieseline	1.5m x 1.5m / 59" x 59"
Threads	Aurifil 50wt for piecing and 40wt for quilting	

### Notes:

- Read the pattern in full before starting.
- ¼" seams are used throughout except where stated otherwise.
- Press after each seam, pressing seams open or to one side as preferred.
- WOF - width of fabric - a strip of fabric cut from selvedge to selvedge.
- LOF - length of fabric - a strip of fabric cut parallel to the selvages.
- Make sure to visit <http://www.makoweruk.com/projects/> to ensure you are working from the most up-to-date version of the pattern.

## Cutting the fabrics

1. See fig 1 which shows which fabrics go where in the quilt top and which templates are used for each section.  
NB: where fig 1 indicates "R", eg 4R, 5R or 6R, use the template pinned to the right side of the fabric. Where fig 1 indicates "W", eg 4W, 5W or 6W, use the template pinned to the wrong side of the template.
2. Before starting cutting, print out all the templates and tape together at the coloured lines. For example tape template 6 together with the blue lines together and the red lines together.

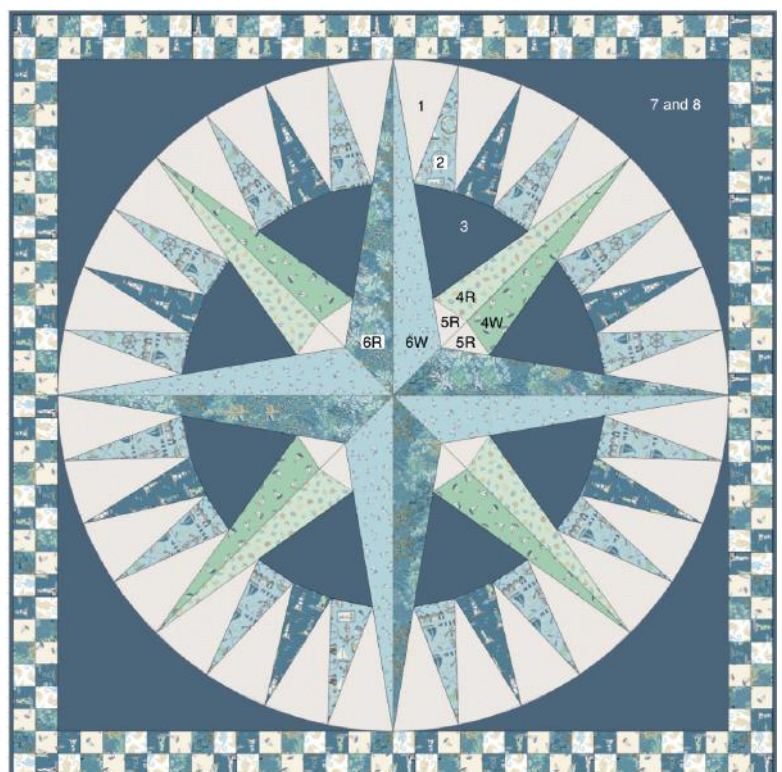


fig 1

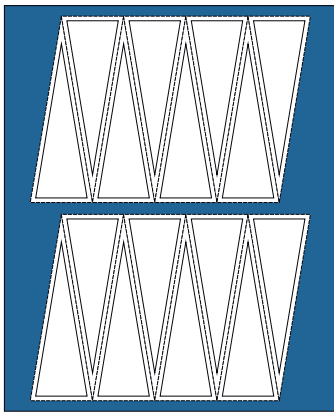


fig 2

3. Cut the Icons fabric fat quarter into two 10" LOF strips and cut each of those into eight template 2 triangles (see fig 2).
4. Cut the Lighthouses fabric into one 5 1/2" WOF strip and four 2" WOF strips. Cut eight template 2 triangles from the 5 1/2" strip (see fig 3). Cut the 2" WOF strips into two equal lengths (of ~21" each).

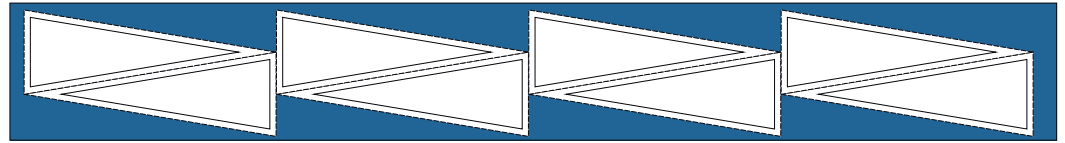


fig 3

5. Cut the Coral fabric into one 8" WOF strip and three 2" WOF strips. Cut the 8" WOF strip into four of template 6 (see fig 4). Cut the remainder into four 2" WOF strips and cut those into two equal lengths as for the Lighthouses 2" strips.

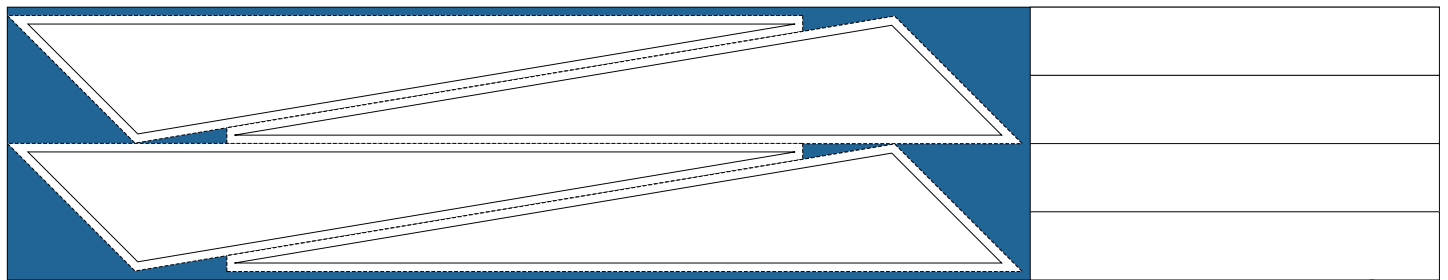


fig 4

6. Cut four of template 6 from the Seagulls fabric in the same way as shown in fig 4 but with the templates pinned to the wrong side of the fabric and without cutting the remainder into 2" strips.
7. Cut the cream Boats fabric FQ into eight 2" WOF strips.
8. Cut the green Boats fabric F8th into four of template 4 with the templates pinned to the wrong side of the fabric.
9. Cut the green Shells fabric F8th into four of template 4 with the templates pinned to the right side of the fabric.
10. Cut the Seahorses fabric FQ into eight 2" WOF strips.
11. Cut the blue Linen Texture fabric into four 8" WOF strips and five 2 1/2" WOF strips for binding. Place the 8" WOF strips one on top of the other with two facing right side up and two facing wrong side up. Pin templates 7 and 8 to the four layers and cut out. Cut two of template 3 from the remainder (to make 8 in total). See fig 5 for layout of the templates for this step. Make sure to mark the red dots either with a washable fabric marker or by cutting 1/8" snips into the seam allowances.

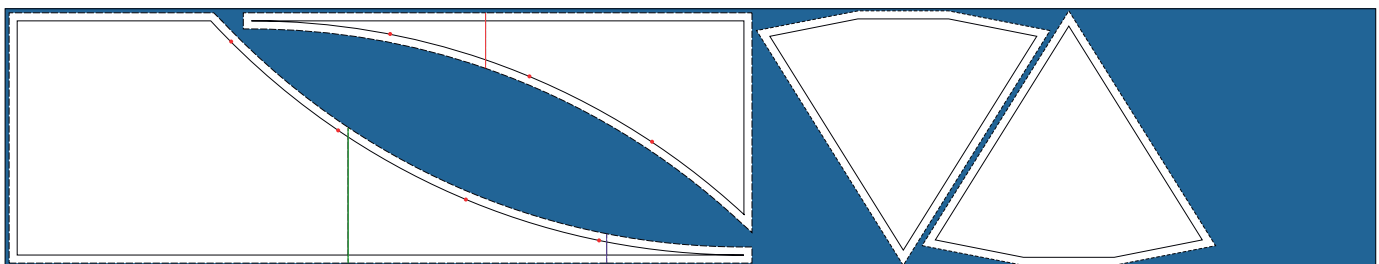


fig 5

12. Cut the Bijoux fabric into three 10" WOF strips. Cut fourteen template 1 shapes from two of the strips and four from the third. Cut four template 5 shapes from the remainder with the template pinned to the right side of the fabric and four with the template pinned to the wrong side of the fabric.
13. Cut the backing fabric into two equal lengths.

## Making the Mariner's Compass

1. Sew the template 7 and template 8 pieces together as shown in fig 6 with the images on the left showing the fabrics as they were cut on the wrong and right side of the fabric and the images on the wrong showing how those pieces are swapped around to make the four corner sections of the quilt.
2. Follow fig 7 to assemble each of the eight sections of the Mariner's Compass.

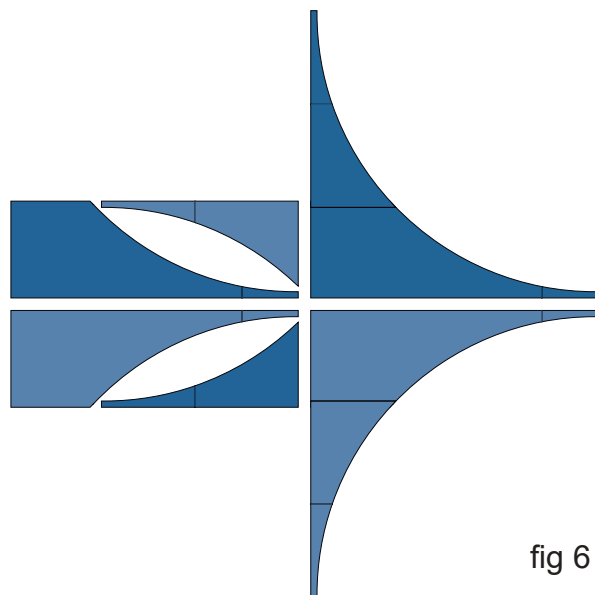


fig 6

3. First sew the template 1 and 2 pieces into sections with four template 1 pieces, two template 2 Icons and one template 2 Lighthouses. Make eight of these.
4. Sew template 3 pieces to the bottom of each of these taking care to stop with the needle in the down position, pivot and realign the fabrics at the points where the seams meet the corners of the template 3 pieces.
5. Sew a template 5R Bijoux piece to a green Shells template 4R piece and a template 5W Bijoux piece to a green Boats template 4W piece. Make four of these.
6. Follow fig 7 which shows you where to attach each of the pieces made at 5 above to the pieces made at 4 above.
7. Again follow fig 7 which shows you where to attach the template 6 pieces.
8. Sew these pieces into four pairs along the diagonal.
9. Sew template 7/8 pieces to the curved edges of each of these four sections, taking care to align the seams with the marked points on the blue Linen Texture.
10. Sew the quarters of the quilt top into pairs then those two halves of the quilt top to finish.

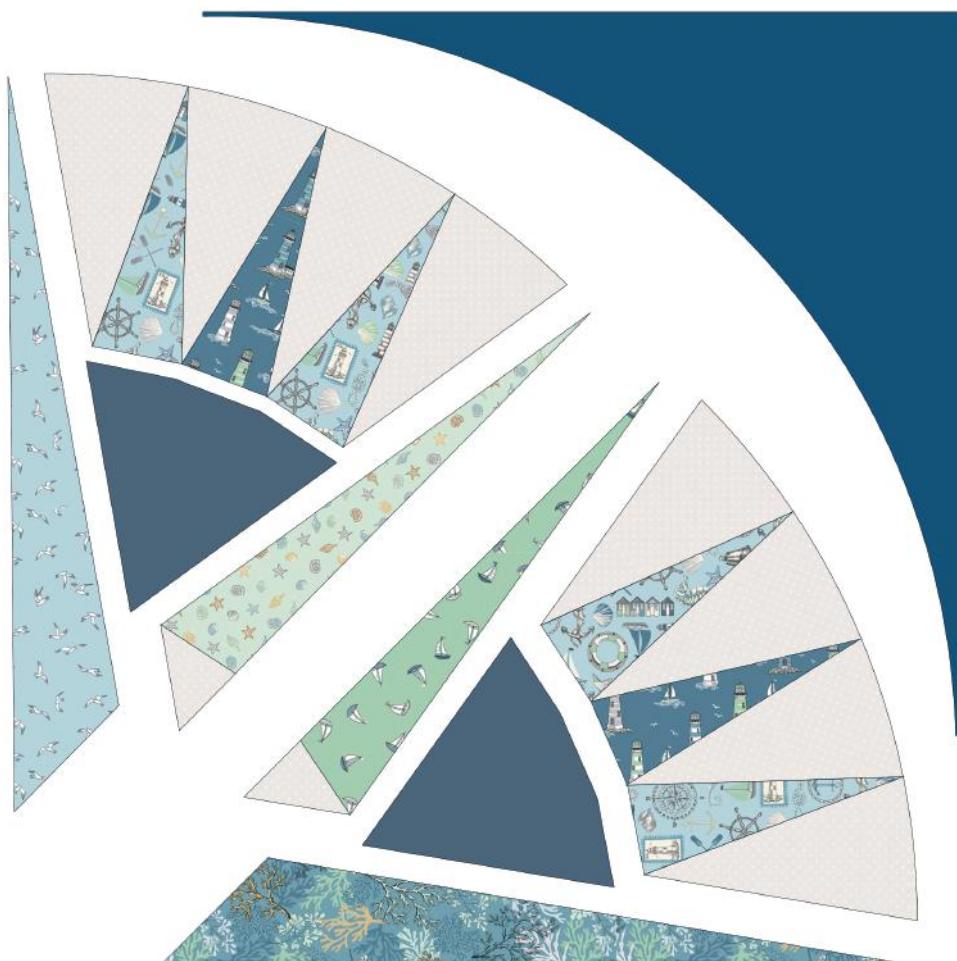


fig 7

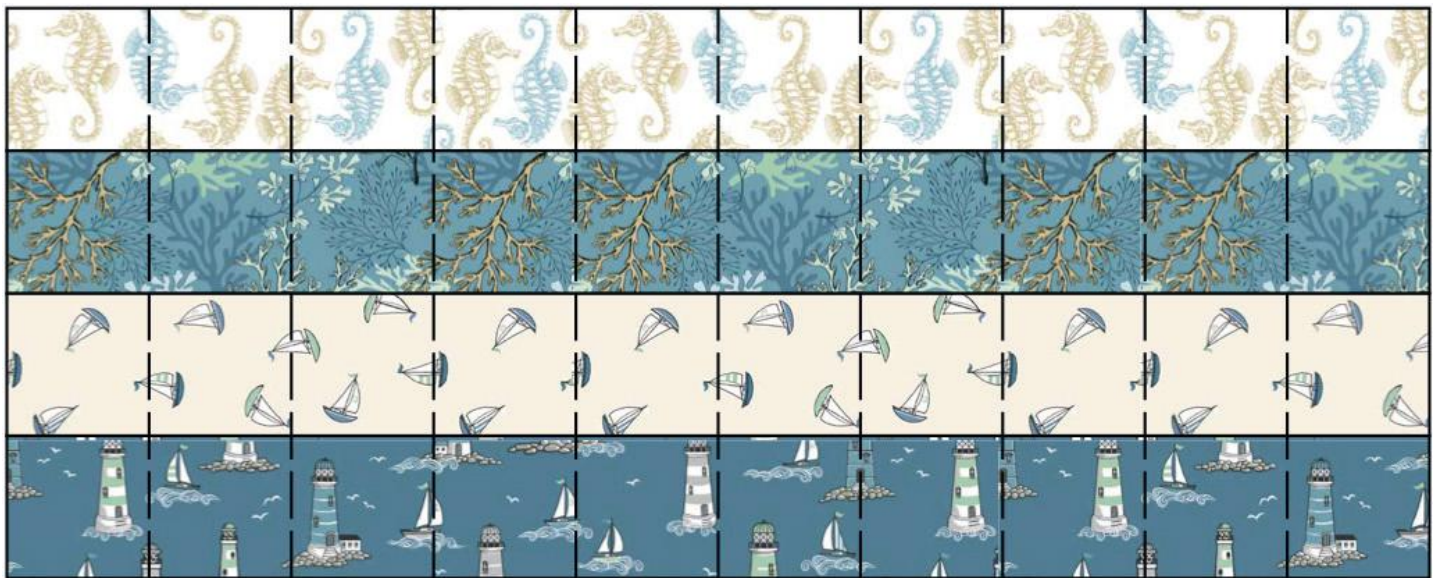


fig 8

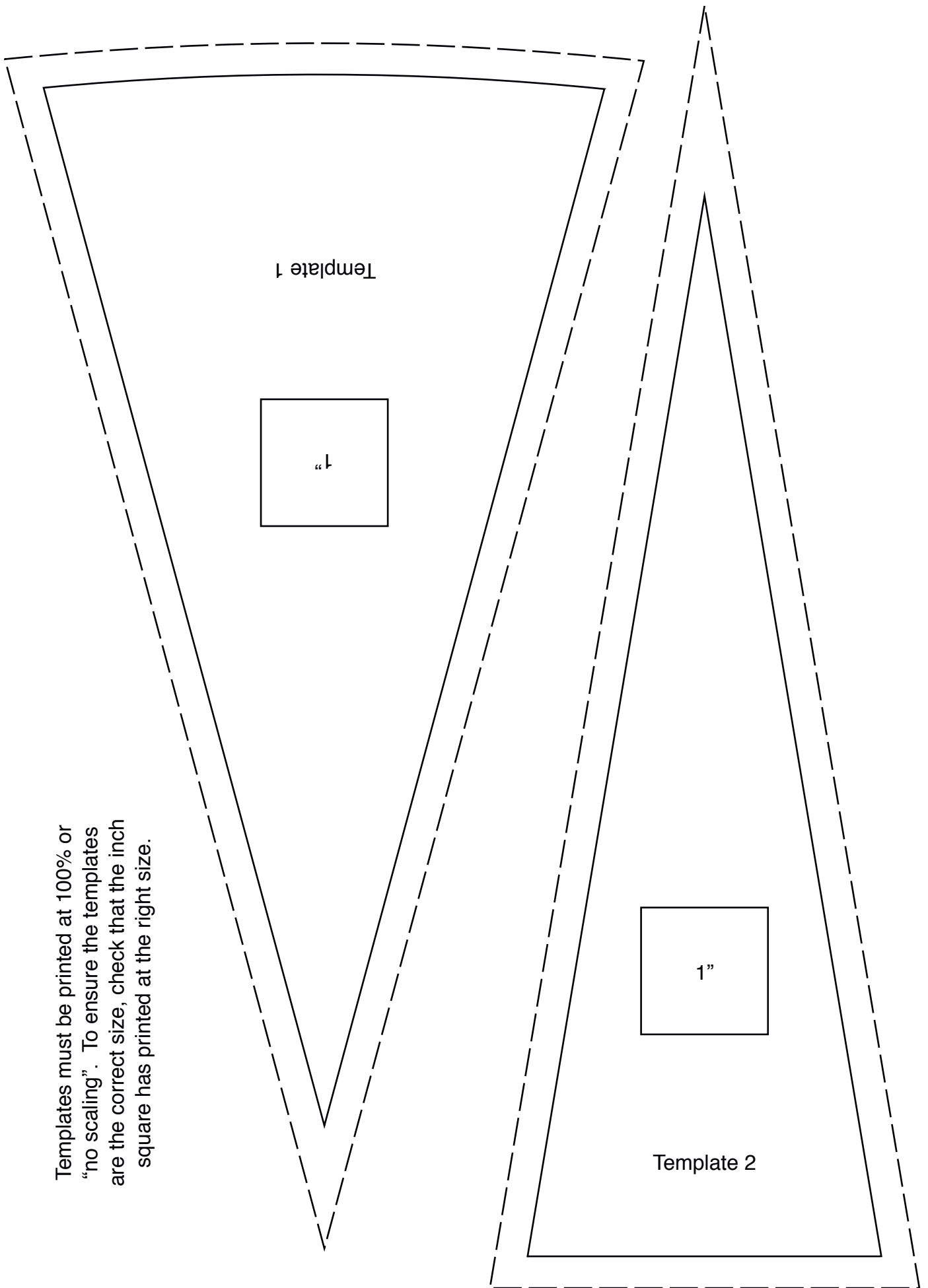
### **Making the checkerboard border**

1. Sew the shorter Coral fabric 2" strips into two longer strips by sewing them into pairs, joining them at the ends.
2. Sew the 2" strips into eight groups of four (see fig 8) then cut into ten 2" strips as also shown in fig 8.
3. Sew all of those strips end to end to make one continuous piece.
4. Separate the very long strip into four lengths of thirty squares each (which will go onto the sides of the quilt) and four lengths of thirty-four squares each (which will go onto the top and bottom of the quilt).
5. Sew the lengths of thirty squares into pairs in a checkerboard pattern taking care that a cream boats or seahorses fabric appears top left at the (left hand) start of the strip and bottom right at the (right hand) end of the strip.
6. Sew these to either side of the quilt.
7. Sew the thirty-four square strips into pairs making sure that a lighthouses or coral fabric appears top left at the (left hand) start of the strip and bottom right at the (right hand) end of the strip.
8. Sew these two strips to the top and bottom of the quilt top to finish.

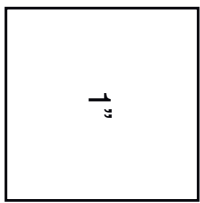
### **Finishing the quilt**

1. Sew the binding strips end to end using diagonal or straight seams as preferred and press wrong sides together along the length to make a double fold binding.
2. Make a quilt sandwich, basting together the quilt back, the wadding and the quilt top.
3. Quilt as desired then trim the quilt square, removing excess wadding and backing. We quilted a diagonal cross hatch of lines approximately 1" apart using a cream 40wt Aurifil thread.
4. Bind the quilt taking care to mitre the corners.

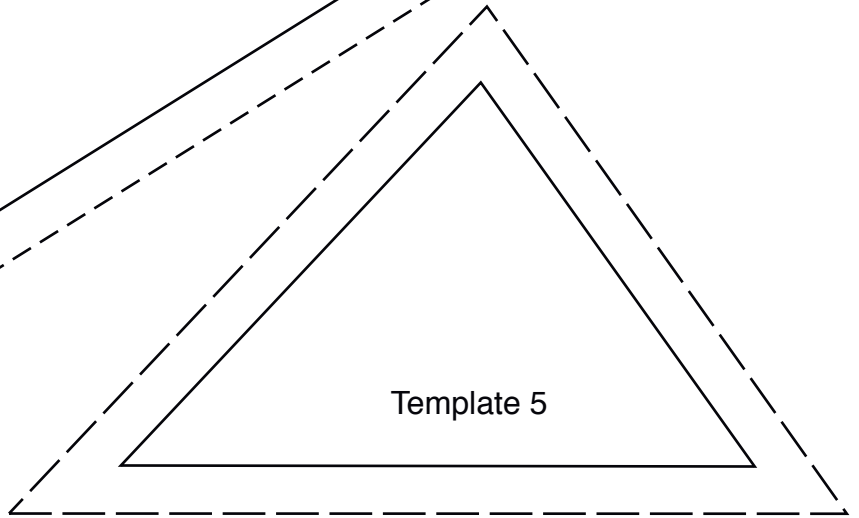
Templates must be printed at 100% or "no scaling". To ensure the templates are the correct size, check that the inch square has printed at the right size.

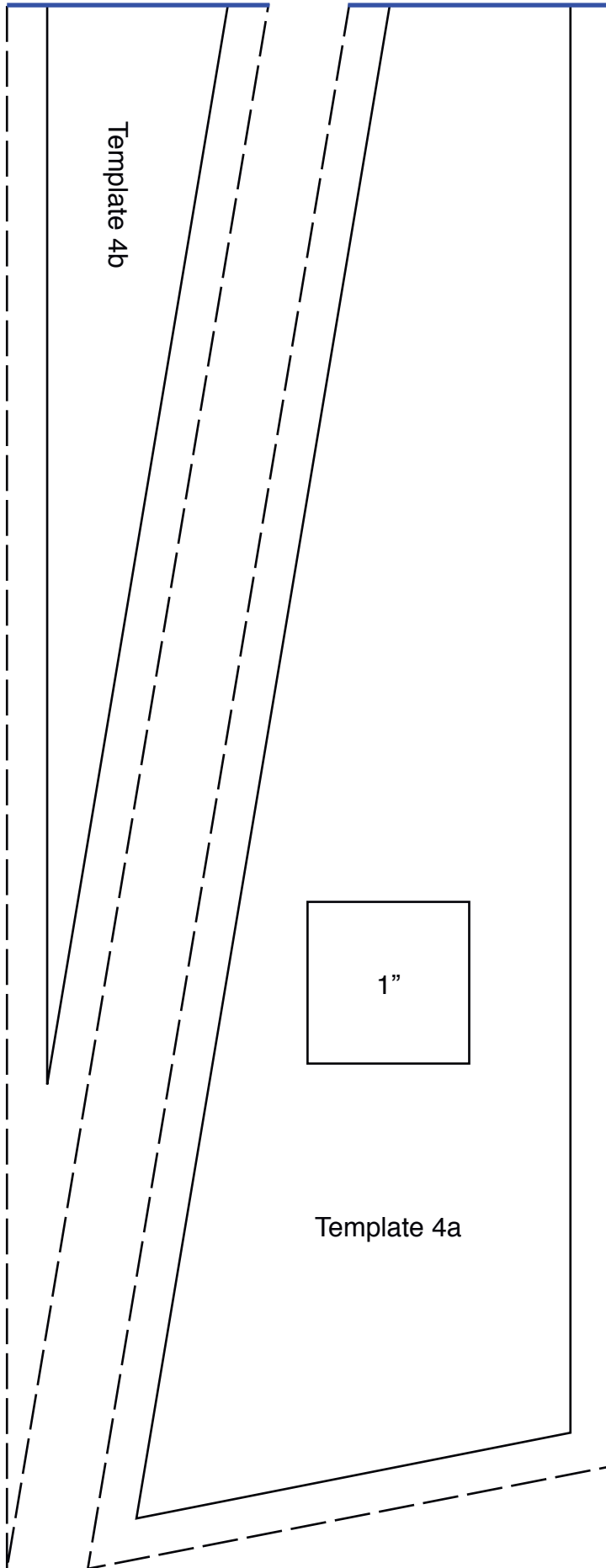


Templates must be printed at 100% or "no scaling". To ensure the templates are the correct size, check that the inch square has printed at the right size.

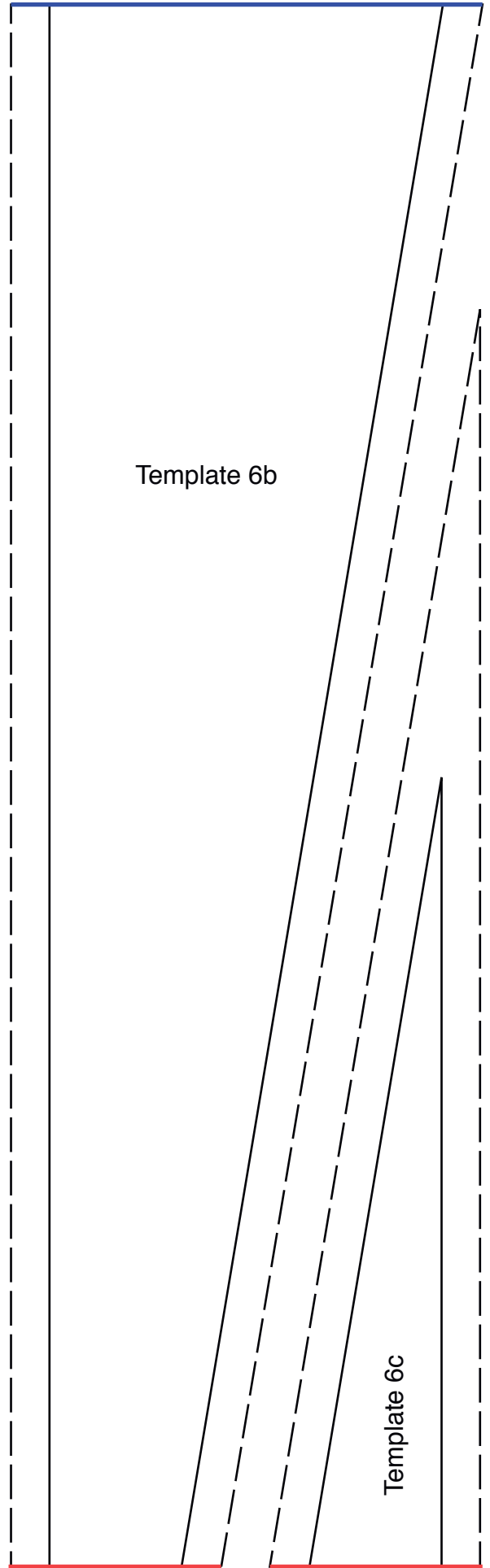
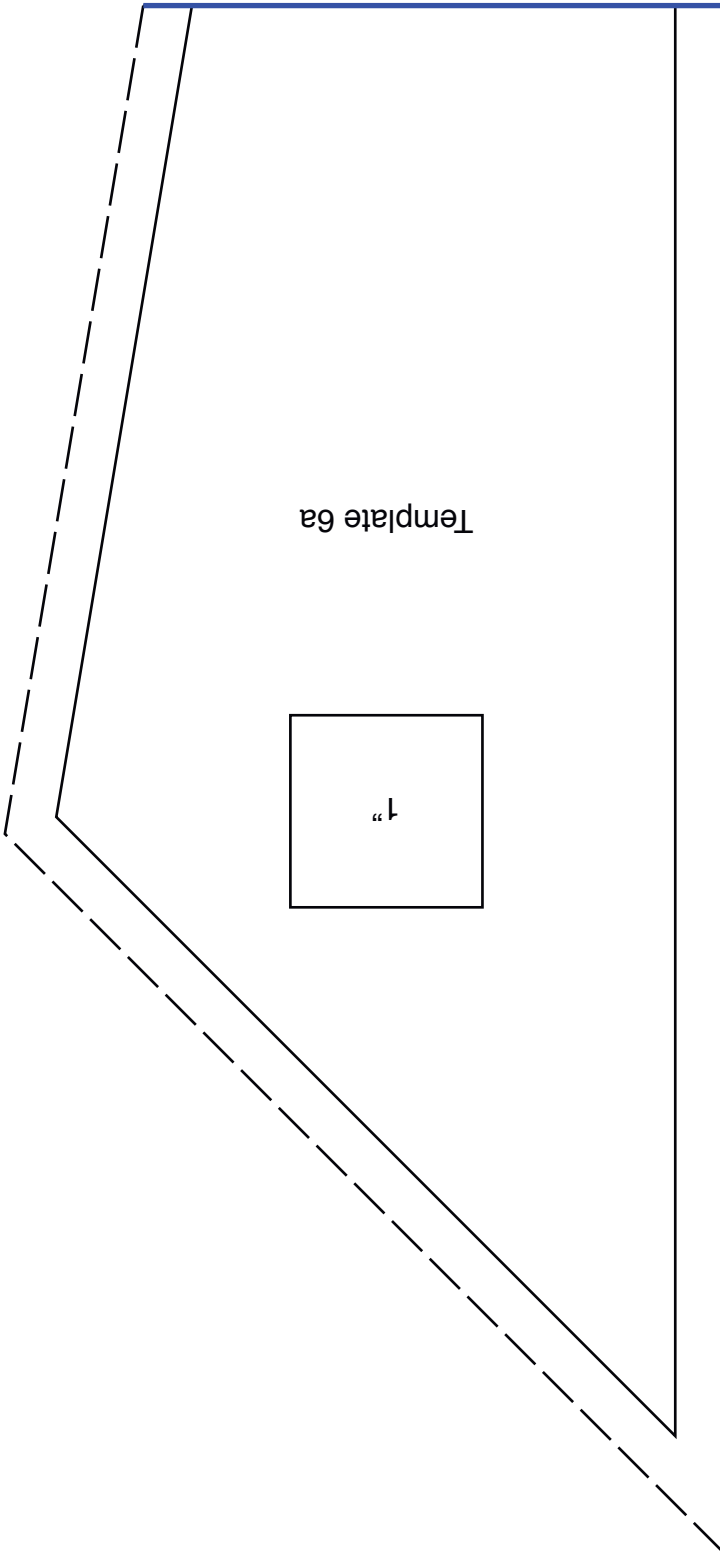


Template 3

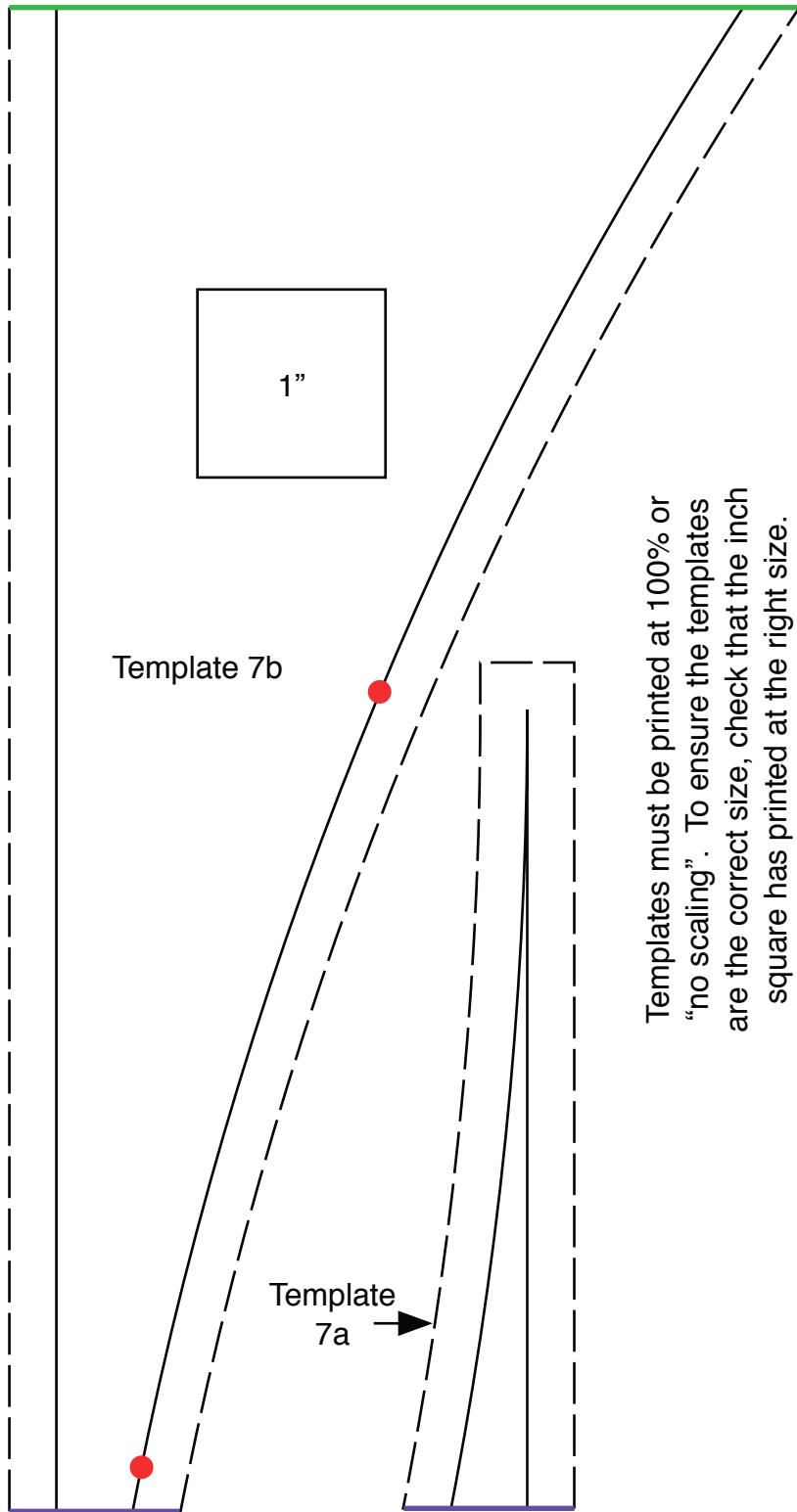




Templates must be printed at 100% or "no scaling". To ensure the templates are the correct size, measure the guide line to make sure it has printed at the correct length.



Templates must be printed at 100% or “no scaling”. To ensure the templates are the correct size, check that the inch square has printed at the right size.

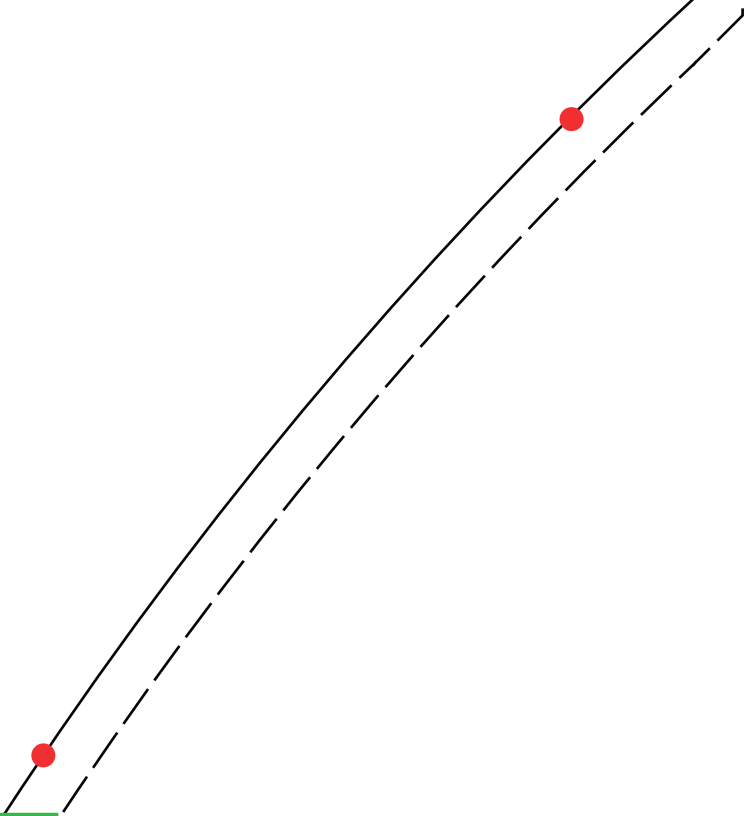


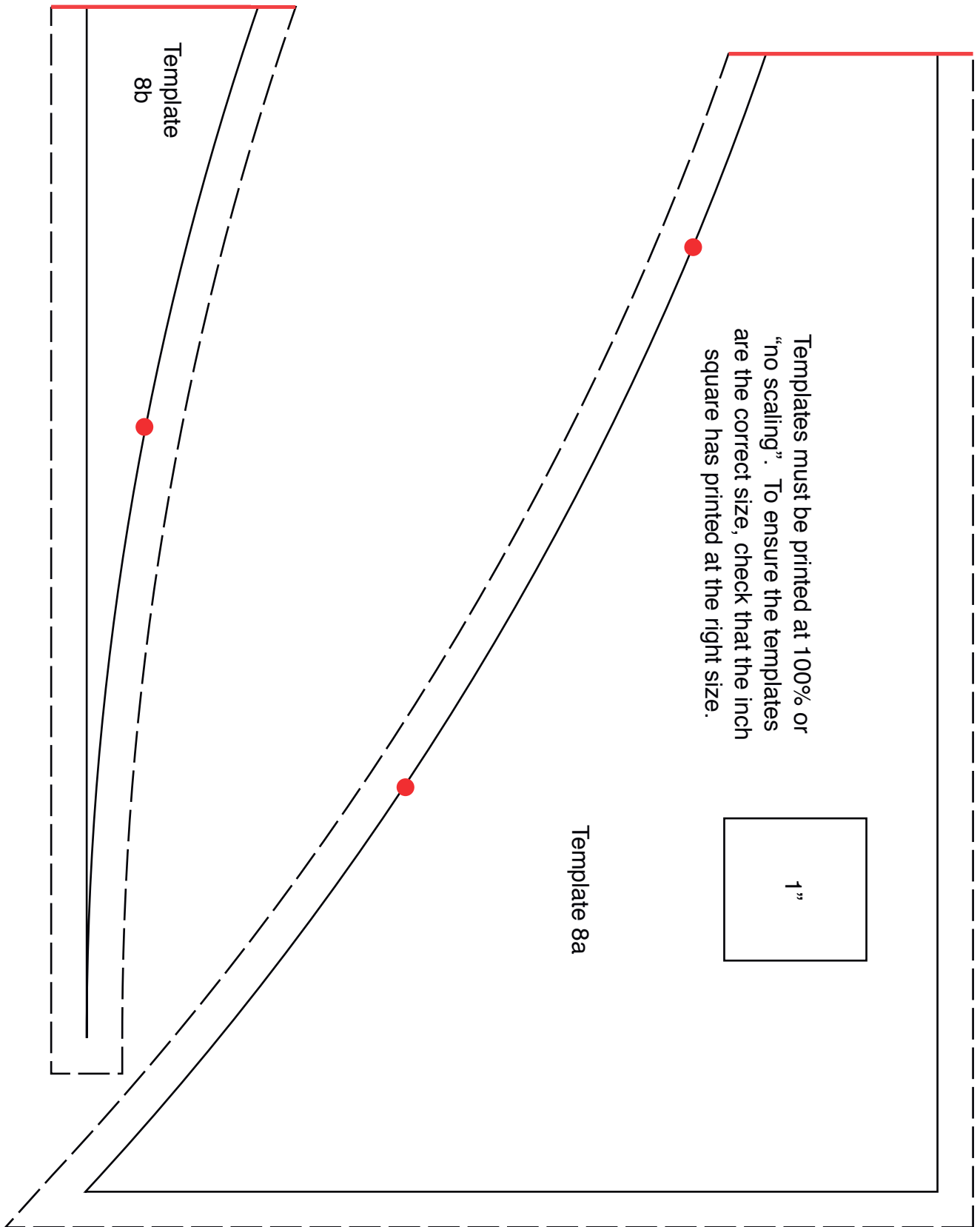
Templates must be printed at 100% or  
 “no scaling”. To ensure the templates  
 are the correct size, check that the inch  
 square has printed at the right size.

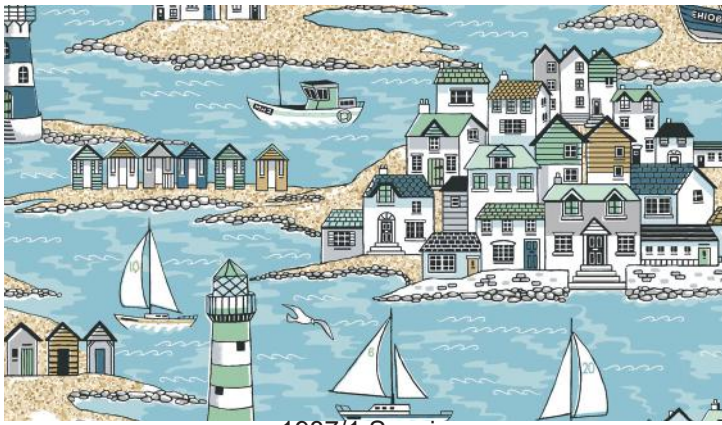
Templates must be printed at 100% or “no scaling”. To ensure the templates are the correct size, check that the inch square has printed at the right size.



Template 7c







\*1987/1 Scenic



\*1988/1 Beach Huts



\*1989/1 Icons



\*1990/1 Light Houses



\*1992/1 Seagulls



\*1994/1 Shells



\*1993 Q Boats



\*1993 T Boats



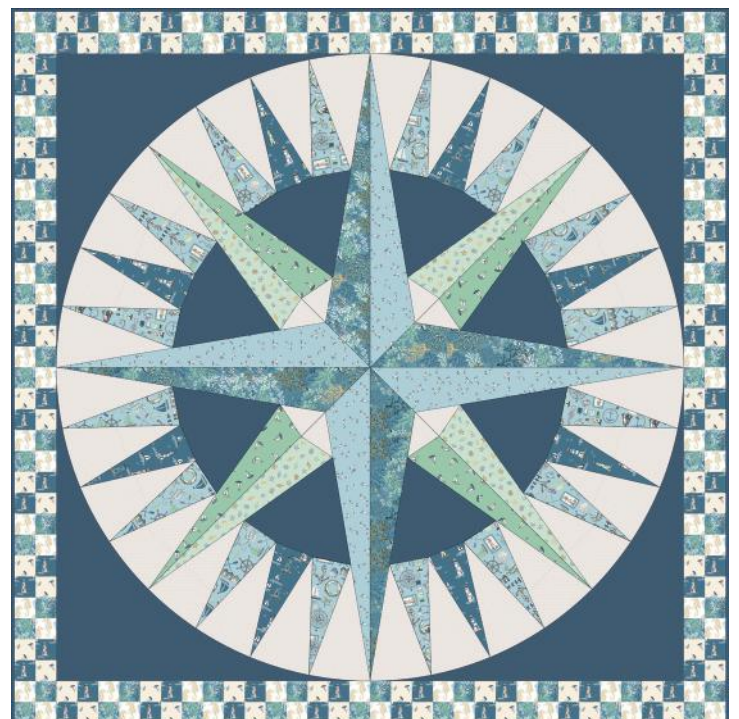
\*1995/1 Seahorses



\*1991/1 Coral



1997/1 Bunting Panel  
(each panel 24" x 44" / 60cms x 112cms)



Finished size 51" x 51" (1.30m x 1.30m)  
Designed by Lynne Goldsworthy of [lilysquilts.blogspot.com](http://lilysquilts.blogspot.com)  
using the Beachcomber collection from Makower UK  
Download free instructions from [www.makoweruk.com](http://www.makoweruk.com)  
\*designs used in quilt, also requires 1473 B7 and 2/8702 C