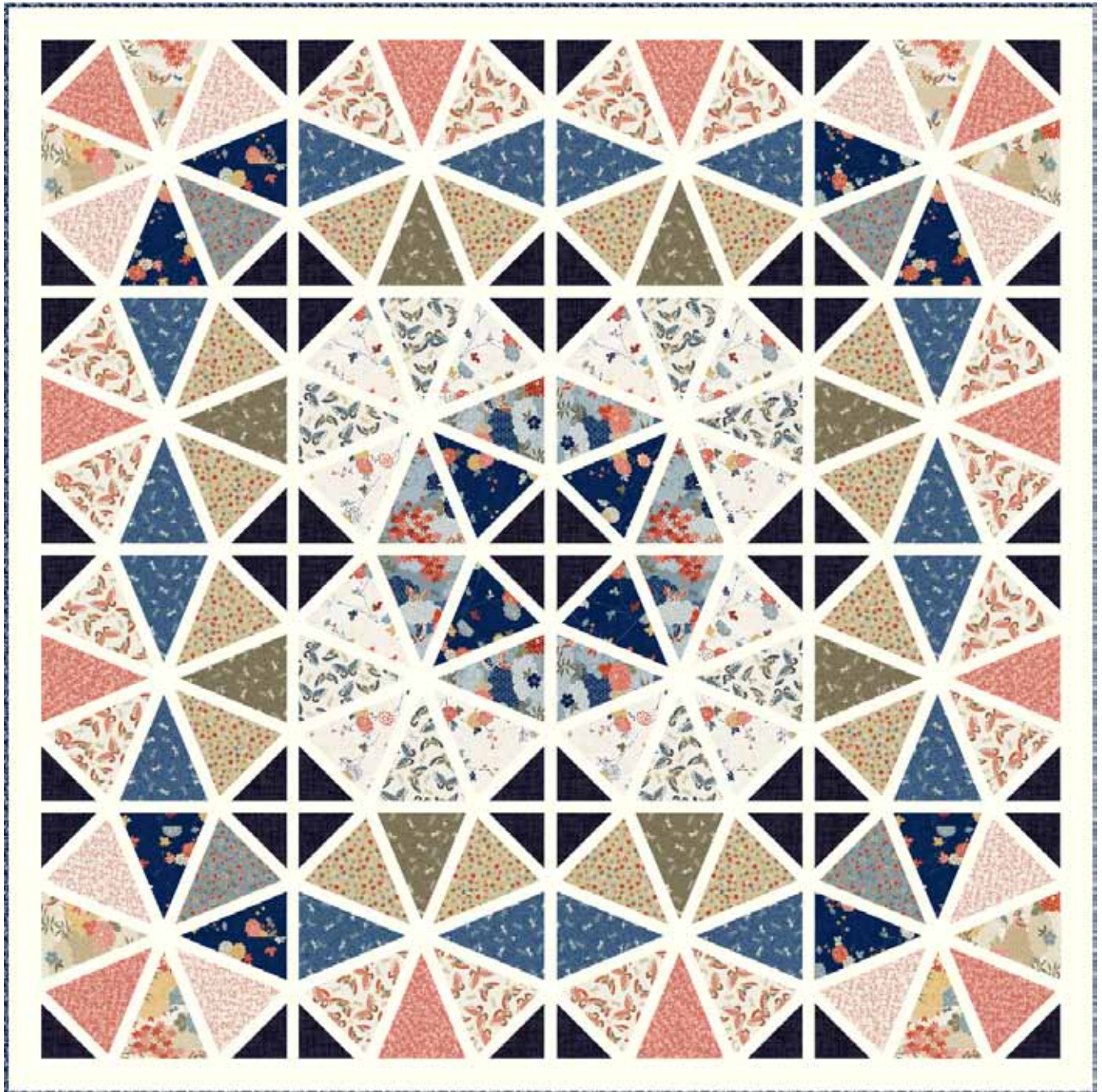


# Japanese Parasols

Finished size 67" x 67" (1.7m x 1.7m)


Designed by Lynne Goldsworthy of [lilysquilts.blogspot.com](http://lilysquilts.blogspot.com)

using the Japanese Garden collection from Makower UK [www.makoweruk.com](http://www.makoweruk.com)



[makower uk](http://www.makoweruk.com)

Unit 14, Cordwallis Business Park, Clivemont Road,  
Maidenhead, Berkshire SL6 7BU +44(0)1628 509640  
[sales@makoweruk.com](mailto:sales@makoweruk.com) [www.makoweruk.com](http://www.makoweruk.com)

 andover

# Japanese Parasols

Finished size 67" x 67" (1.7m x 1.7m)

Designed by Lynne Goldsworthy of [lilysquilts.blogspot.com](http://lilysquilts.blogspot.com)

using the Japanese Garden collection from Makower UK [www.makoweruk.com](http://www.makoweruk.com)

## **Fabric Requirements**

Description	Code	Requirement	Cut
Butterfly coral	1858 P	½ m / ½ yd	Sixteen triangles (see cutting instructions for cutting triangles)
Butterfly blue	1858 B	FQ	Eight triangles
Maple Leaf blue	1859 B	F8th	Four triangles
Maple Leaf green	1859 G	½ m / ½ yd	Sixteen triangles
Mini Blossom coral	1861 P7	½ m / ½ yd	Twelve triangles
Mini Blossom blue (binding)	1861 B9	½ m / ½ yd	Seven 2 ½" WOF strips
Mini Blossom coral on cream	1861 P4	FQ	Eight triangles
Montage blue	1856 B	FQ	Eight triangles
Montage cream	1856 Q	FQ	Eight triangles
Montage (backing)	1856 B	4 m / 4 ¼ yds	Two equal lengths
Viney Floral cream	1857 Q	½ m / ½ yd	Twelve triangles
Viney Floral blue	1857 B	½ m / ½ yd	Twelve triangles
Mini Dragonfly blue	1860 B	½ m / ½ yd	Sixteen triangles
Mini Dragonfly green	1860 G	FQ	Eight triangles
Spectrum Snow	2000/W02	2 ½ m / 2 ¾ yds	See cutting instructions
Linea indigo	1525 B9	60cm / 20"	See cutting instructions
Wadding		1.9m sq / 75" sq	
Templates			Thirty-two A, thirty-two B and one triangle template

Notes:

- Read the pattern in full before starting.
- ¼" seams are used throughout except where stated otherwise.
- Press after each seam, pressing seams open or to one side as preferred.
- WOF - width of fabric – a strip of fabric cut from selvedge to selvedge.
- The templates in this pattern are foundation paper pieced (FPP). If you haven't FPPed before, you can find a good online tutorial here: <http://www.lovepatchworkandquilting.com/we-love/foundation-paper-piece>
- Make sure to visit <http://www.makoweruk.com/projects/> to ensure you are working from the most up-to-date version of the pattern.

## **Cutting Instructions**

1. Cut out the fabrics as set out in the fabric requirements table. To cut the triangles, cut the fabrics into 8" WOF strips and use the triangle template as a guide.
2. Cut the spectrum fabric into thirty-seven 1 ½" strips, eighteen 1 ¼" and seven 2 ½" WOF strips.

Cut the 1 ½” strips as follows:

- Twenty-four into ninety-six 9” lengths; and
- Thirteen into sixty-four 8” lengths.

Cut the 1 ¼” WOF strips as follows:

- Eight into sixteen 20” lengths; and
- Sew remaining ten end to end and cut into twelve 15 ½” and three 62 ¾” lengths.

Sew the 2 ½” WOF strips end to end and cut into two 62 ¾” and two 66 ¾” lengths.

3. Cut the linea tonal into four 5” WOF strips. Cut those into thirty-two 5” squares and cut those in half on the diagonal.

## **Making the quilt top**

1. Trim templates 1 and 2 to the red line and tape together to make thirty-two templates. You will need two templates per block.

NB: If you mark fabric placement on the front of the templates, following the main quilt image, remember that the fabrics are pieced on the back of the templates so this image will be reversed.

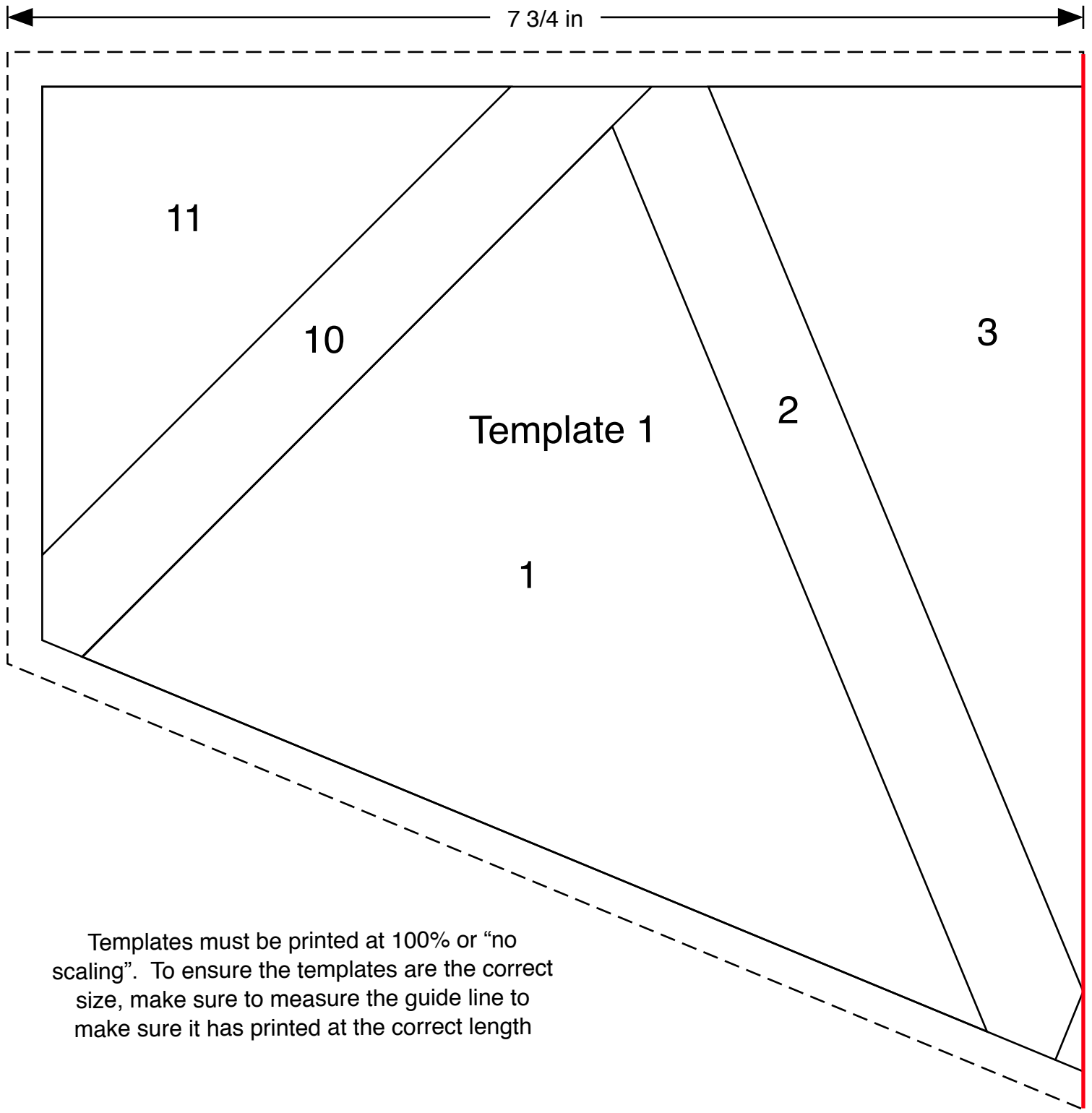
2. Foundation paper piece the templates following the fabric layout in the main quilt image. You will be making four A blocks, eight B blocks and four C blocks. These are shown below.



3. Use the triangles for sections 1, 3, 5 and 7, the 1 ½” x 9” spectrum strips for sections 2, 4 and 6, the 1 ½” x 8” spectrum strips for sections 8 and 10 and the linea tonal half square triangles for sections 9 and 11.
4. Once pieced, trim the templates and papers to the dashed lines and remove papers.
5. Sew the two halves of each block together using the 1 ¼” x 20” spectrum strips. Trim excess fabric.
6. Sew the blocks into four rows of four with 1 ¼” x 15 ½” strips of spectrum in between the blocks.
7. Sew the four rows together with 1 ¼” x 62 ¾” strips of spectrum in between the rows.
8. Sash the sides of the quilt top with the 2 ½” x 62 ¾” spectrum strips and then the top and bottom with the 2 ½” x 66 ¾” strips.

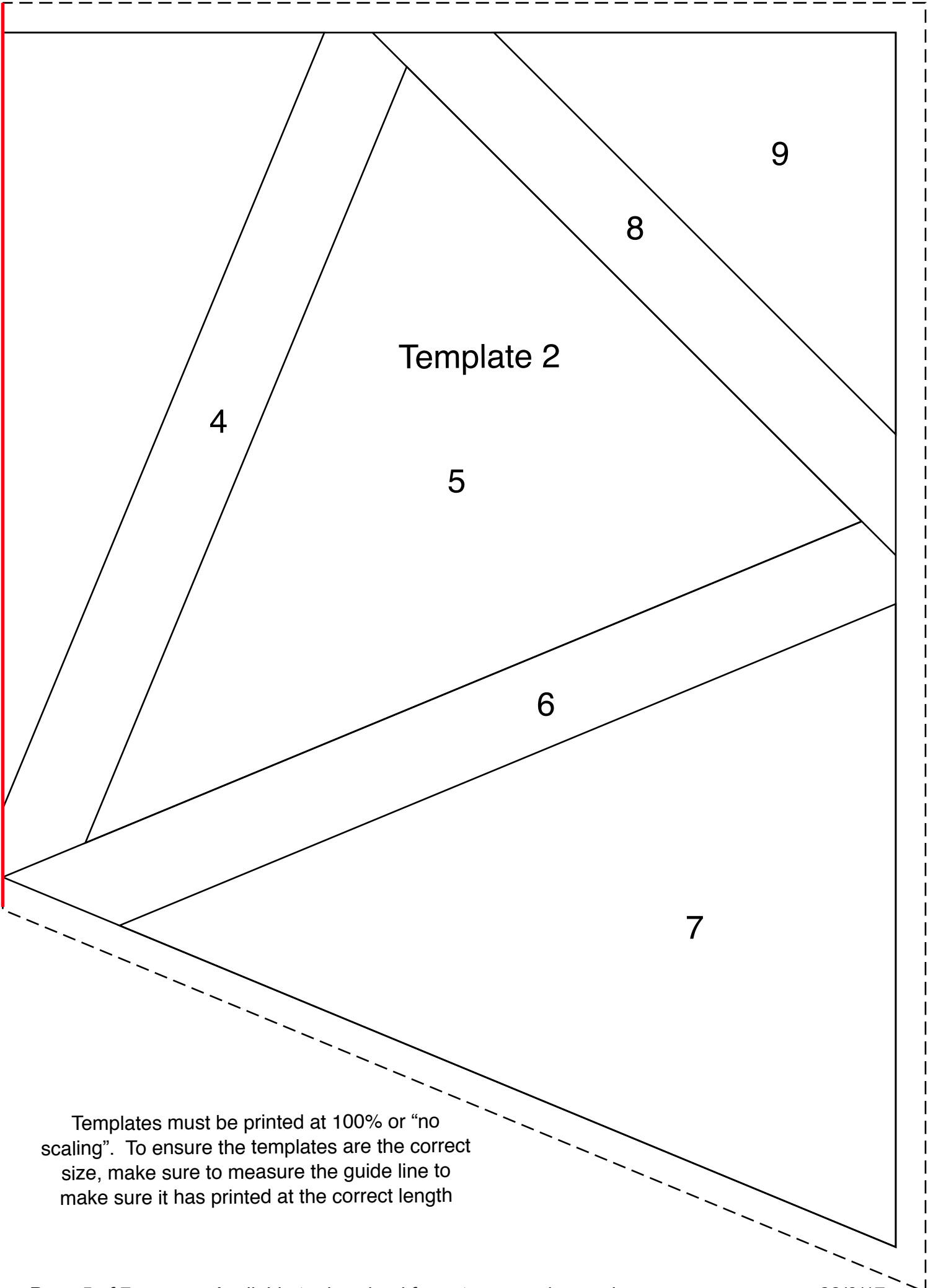
## **Finishing the quilt**

1. Sew the binding strips end to end using diagonal or straight seams as preferred and press wrong sides together along the length to make a double fold binding.
2. Make a quilt sandwich, basting together the back, the wadding and the top.
3. Quilt as desired then trim square, removing excess wadding and backing. We quilted in the ditch throughout using a cream Aurifil 40wt thread on the front and back.
4. Bind the quilt taking care to mitre the corners.



Templates must be printed at 100% or “no scaling”. To ensure the templates are the correct size, make sure to measure the guide line to make sure it has printed at the correct length

7 3/4 in



Template 2

4

5

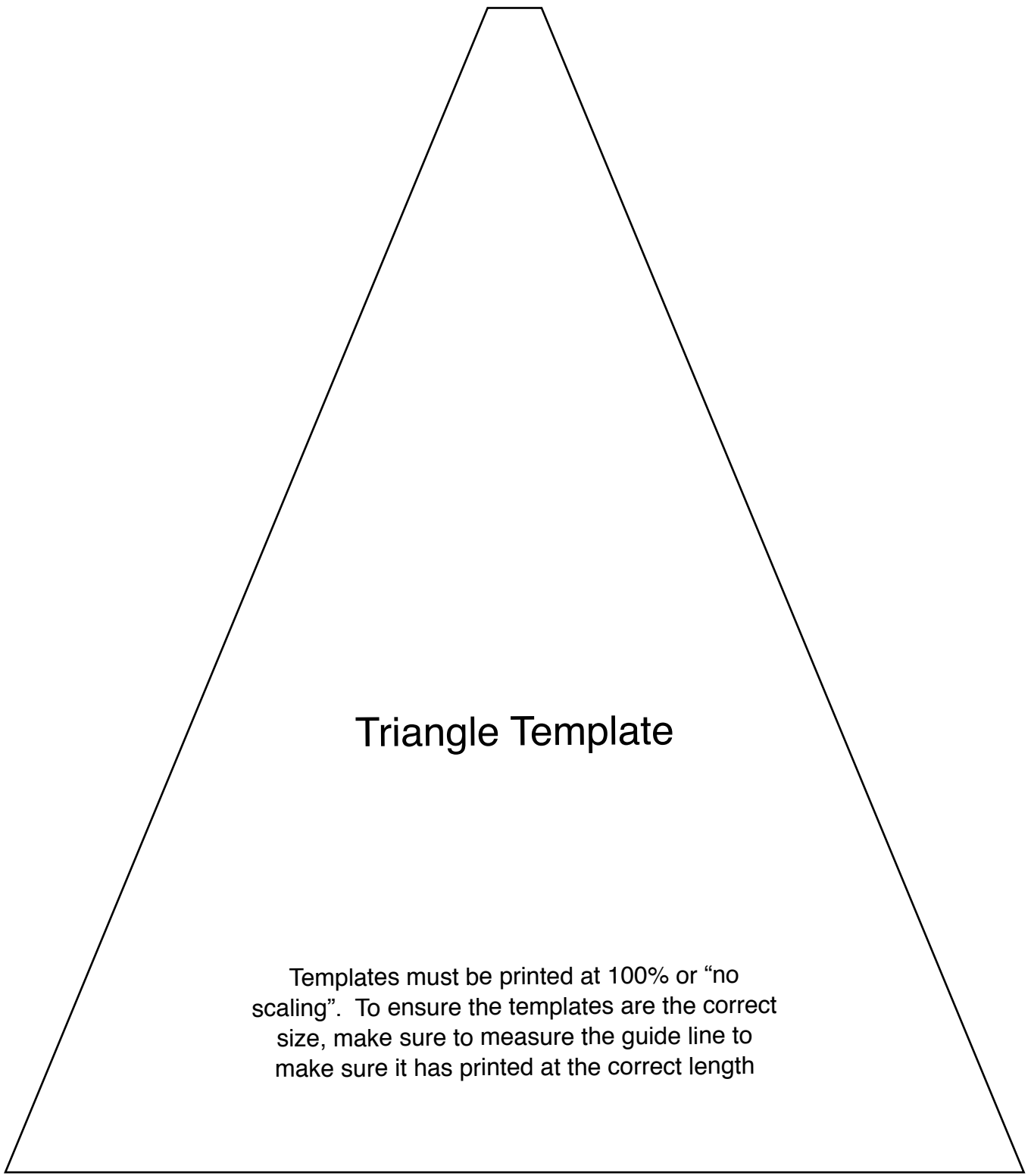
6

7

8

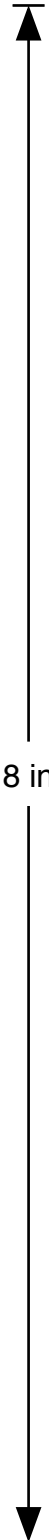
9

Templates must be printed at 100% or “no scaling”. To ensure the templates are the correct size, make sure to measure the guide line to make sure it has printed at the correct length



# Triangle Template

Templates must be printed at 100% or “no scaling”. To ensure the templates are the correct size, make sure to measure the guide line to make sure it has printed at the correct length



8 in



\*1856/B Montage



\*1856/Q Montage



\*1857/B Floral Vine



\*1859/G Maple Leaf



\*1859/B Maple Leaf



\*1857/Q Floral Vine



\*1858/P Butterflies



\*1860/G Dragonfly



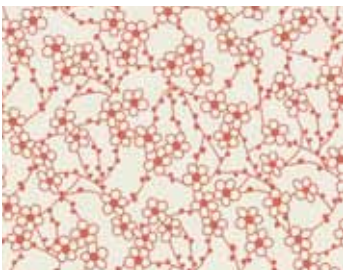
\*1860/B Dragonfly



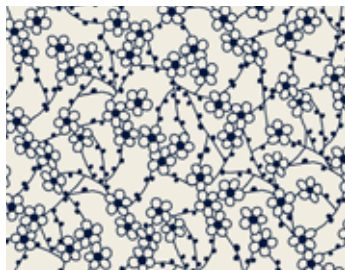
\*1858/B Butterflies



1861/Q Blossom



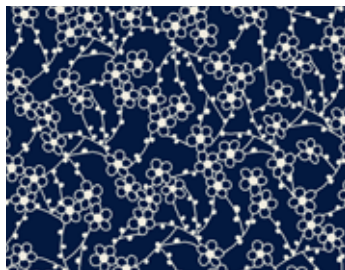
\*1861/P4 Blossom



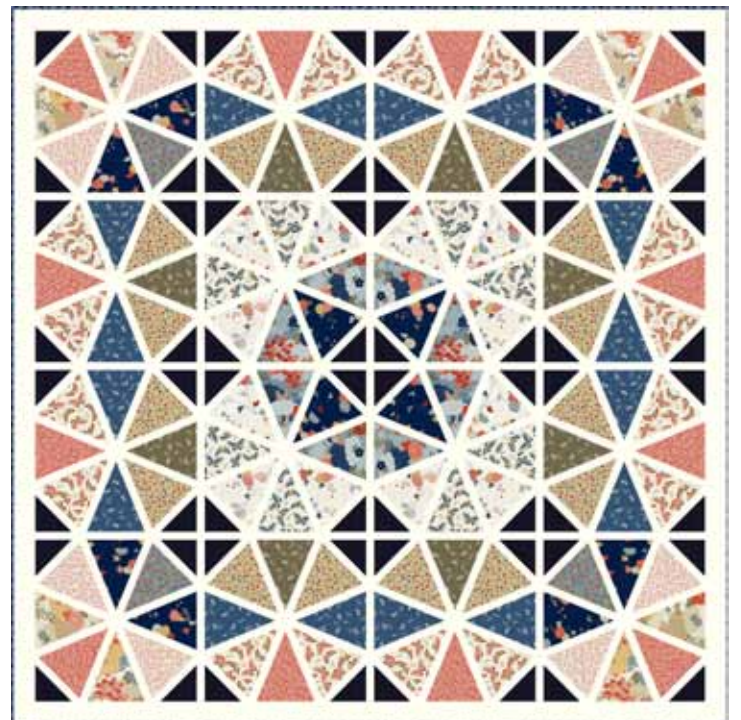
\*1861/B6 Blossom



\*1861/P7 Blossom



\*1861/B9 Blossom



Japanese Parasols by Lynne Goldsworthy  
of [lilysquilts.blogspot.com](http://lilysquilts.blogspot.com)

Finished size 67" x 67" (1.70 x 1.70m)

Download free from [www.makoweruk.com](http://www.makoweruk.com)

\*Designs used in quilt. Also required 1525 B9 & 2000 W02.