

Drawstring bag

Materials needed:

Fabric for outer bag (1/2 metre) (either as a length, or as 2 fat quarters – depending on whether you want the outer bag to be in the same fabric or not)

Fabric for lining of bag (1/2 metre) – again, this could be made with 2 fat quarters.

Ribbon or cord (2 metres)

Sewing machine

Ruler

Scissors

Rotary cutter

Buttons

Bondaweb (for appliqué decoration)

Scraps of fabric (for appliqué decoration)

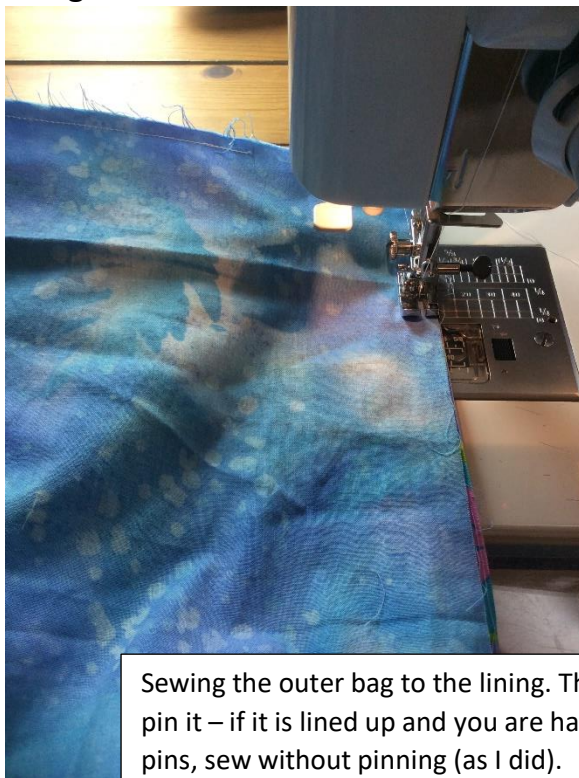
Cotton or polyester thread

Decorative thread for appliqué (rayon or cotton)

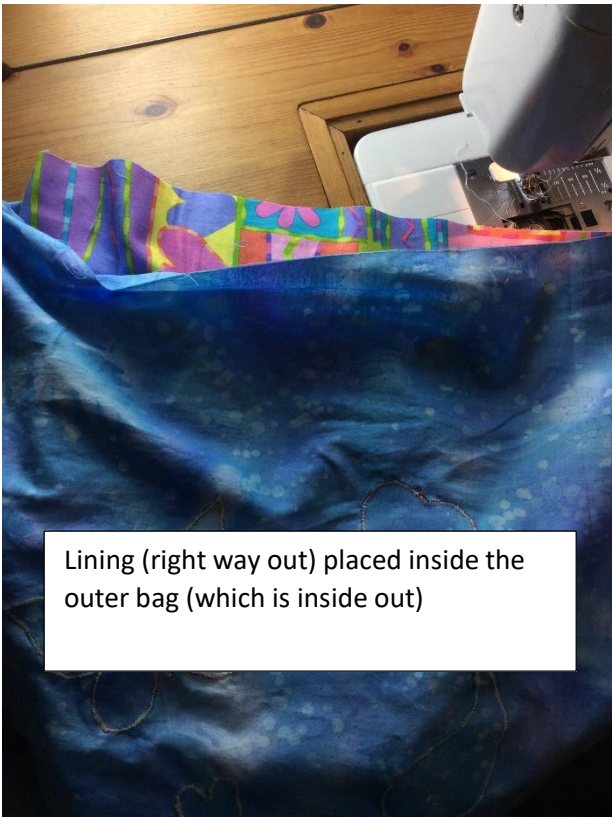
1. Decide on the size you want your bag. For my sample, I went with 16 inches – so I cut my fabric at 16 ½ inches, to include the seam allowance. Fold your fabric in half. Placing the ruler on the fold line (or the size with seam allowance line on the fold line, if you have a large square ruler), cut the outer and lining fabrics to your chosen size (remember to include the seam allowance). NB – I chose to fold the fabric, as it reduced the amount of sewing required.
2. Take the lining fabric, fold in half right sides together, and sew up two opposite sides. Turn this lining the right way out.
3. If you want to decorate your outer bag with embroidery or applique, do that now, as manipulating the fabric will be more tricky once the sides are sewn together. Don't position the design elements too high, as they will be lost when using the drawstring. You also need to leave room for the drawstring channel.
4. Take the outer fabric, and fold it in half, right sides together. Mark 1 ½ inches down from the top, and 3 inches from the top, on both sides of the bag. Sew from the fold up to the first mark you have made, and then

from the second mark to the top. Do this for both sides. This will leave two openings in the side seams. A ¼ inch seam is enough for this.

5. Put the bag lining (which is the right side out) into the outer bag (which is inside out). Match up the seams of the inner and outer bags, and pin the top of the bags together. Sew the top of the inner and outer bag together, using ¼ inch seam allowance.

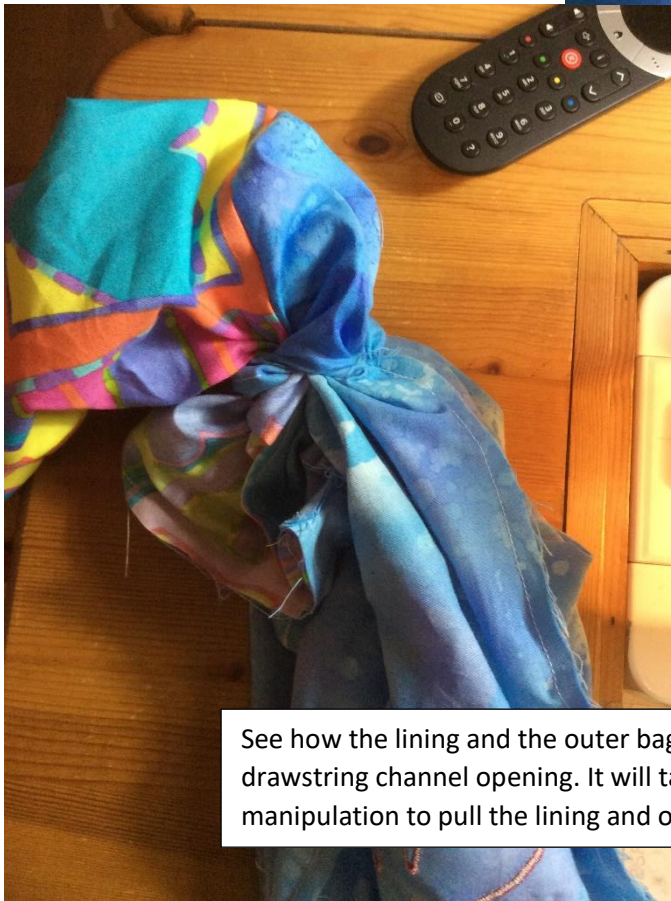


Sewing the outer bag to the lining. The pattern says to pin it – if it is lined up and you are happy not using pins, sew without pinning (as I did).



Lining (right way out) placed inside the outer bag (which is inside out)

6. Pull the inner bag (the lining) through one of the openings in the side seam. As you start to do this, you will also be bringing through the outer bag. Continue until the bag is the right way out. Make sure that once the bag is the right way out, the lining is on the inside.

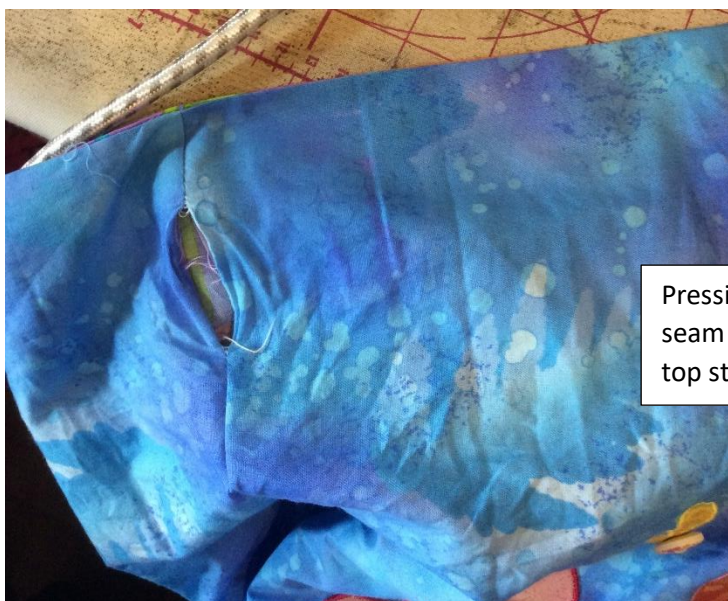


See how the lining and the outer bag are coming out through the drawstring channel opening. It will take a little time and some manipulation to pull the lining and outer bags through the opening.

7. With the lining on the inside, press the top of the bag on the seam, so that it is flat. Top-stitch around the top of the bag.



The bag turned right way out. The patterned fabric is the lining.



Pressing the lining and outer bag on the top seam lines, to create a flat edge ready for top stitching.

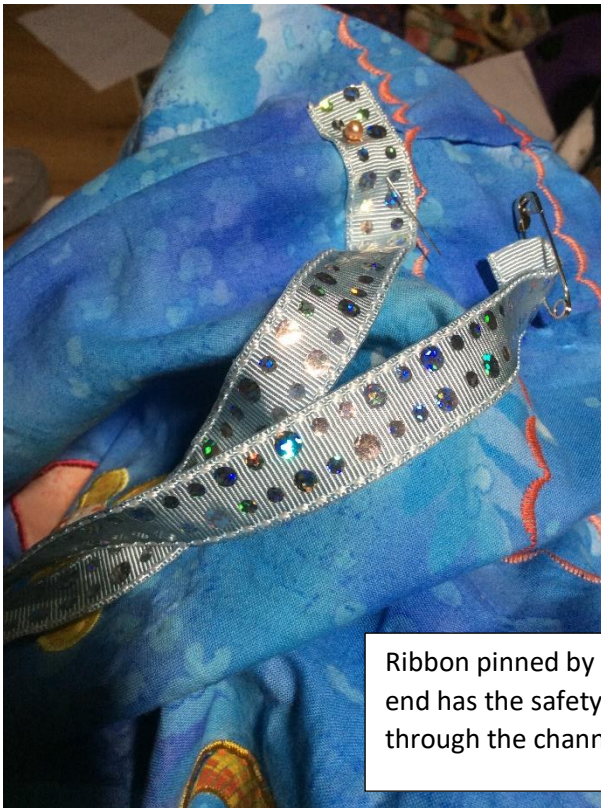
8. Choose a decorative stitch, if your machine has them. Thread the machine with a decorative thread (rayon or cotton – or some other

thread that you like to use for decorative work). Make sure that you have also changed the sewing machine foot, so it is the correct one for the stitch you have chosen. Starting at the opening in the side seam, sew all along the bag, keeping the same distance from the top of the bag all the way round. Sew all the way round the bag.



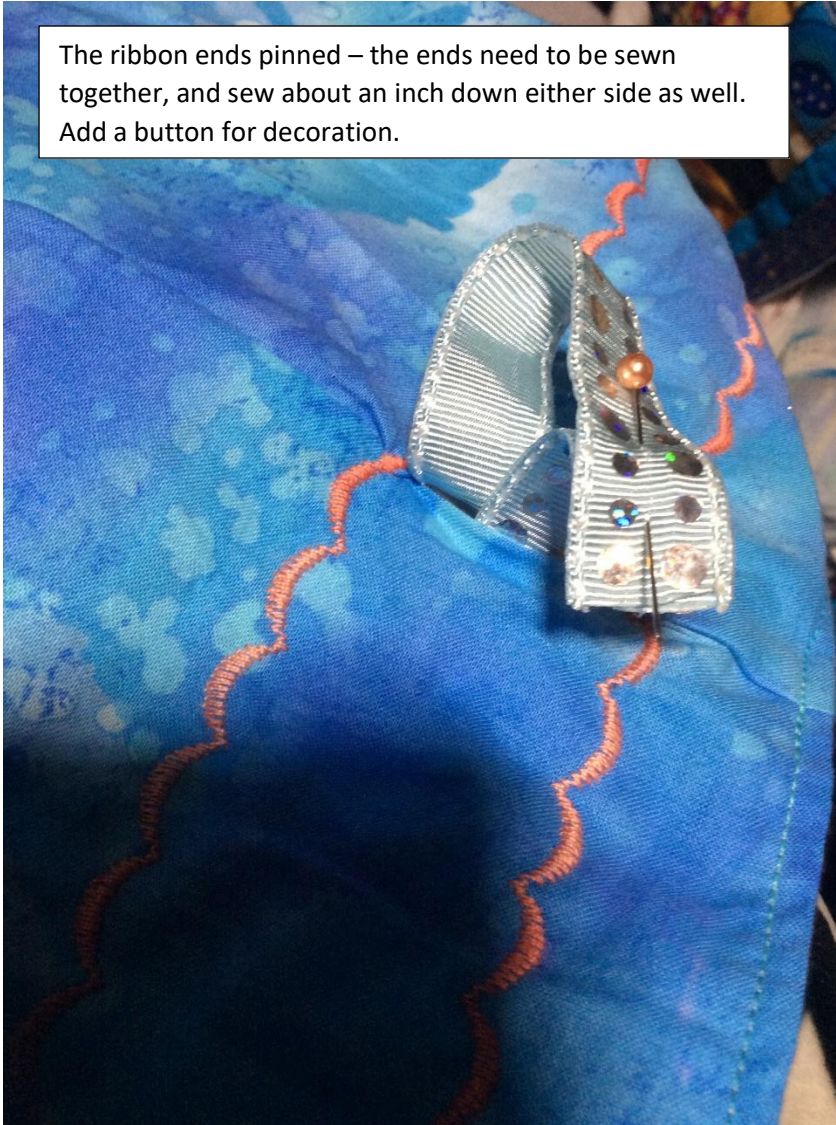
9. If your sewing machine has the option, choose the mirror image of the decorative stitch you have just used. If you do not have this option, use the same stitch, or choose a different one. Start at the lower opening on the seam allowance, and sew all the way around the bag, keeping the same distance between the first line of decorative stitching all the way around. I tried to use the guide that is used with a walking foot, to keep the same distance. This was not entirely successful with the foot I used, but would be an ideal way to keep the same distance when using the walking foot. You could also put a small piece of masking tape on the bed of the machine, to mark the distance. You have now created the channel for your drawstrings.

10. Choose a ribbon or cord to use as the drawstring. You will need a two pieces that are twice the length of the channel, and add two inches to this length – the extra two inches will form tags at either end.
11. Pin one end of the ribbon to the opening in the seam, and put a safety pin in the other end of the ribbon. Thread the ribbon through the channel, all the way round until you meet the end you pinned to the bag. Put the two ends together, and oversew the ends together – creating a tab.



Ribbon pinned by the opening in the seam, and the other end has the safety pin attached, ready to thread the ribbon through the channel created by the decorative stitching.

The ribbon ends pinned – the ends need to be sewn together, and sew about an inch down either side as well. Add a button for decoration.



12. Take the second ribbon, and do the same as in step 11, but this time, start threading from the opening in the other seam.

13. For added decoration, add a button to each tab.

Pull the tabs at either end, and your bag closes!



A few notes about my bag

- I have used my Sizzix Big Shot and Bigz dies to cut some design elements that I have added to the bag. I have not had a problem with the dies not

cutting all the way through for these pieces – although I have used new cutting plates, and only one layer of fabric.

- When using a die cutter to cut out design elements, it will greatly help to use fabric that already has bondweb (or similar) adhered to the fabric first. I have a box containing 'pre-fused' fabric – pieces of about 10 inches square, as there are several patterns / ideas / projects I do that need some small pieces of pre-fused fabric.
- When cutting out design elements in this way, it can be useful to cut out more than you will need – and you will then have a supply for other projects.
- I have added buttons to some of the design elements. Make sure that they are securely attached, and do not give this bag to young children – don't allow them to use it unsupervised. The other option, is to leave off the buttons.
- The method remains the same, regardless of the size of the bag. You could create a more rectangular bag, by using the whole width of the fabric. You may wish to have more of a ruffle at the top of the bag; to do this you will need to have the channel further down from the top edge of the bag.